

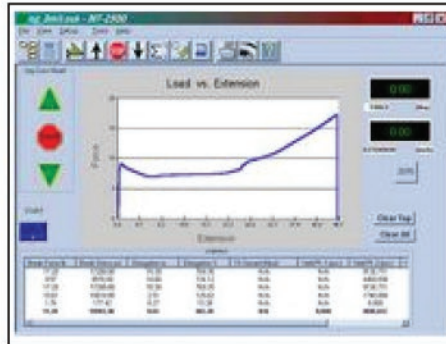
Model MT-500 Software for Motorized Force Test Systems

Model MT-500 Data Acquisition Software for Motorized Force Test Systems

High Performance Graphical / Statistical
Software for Force Tester Systems



Model MT-522 Force Tester with 100 kg (220lb) Digital Force Gauge. Shown with Force Gauge mounted right of column for working table testing.



File Type: DHP_DW_Long Calibrate Zero Measure Capacitance 0.00

File Name: Sample1 F8 F7 F6 Contact 0.00

Last File Accessed: Sample2

Force: F9

Statistics Summary	Range	Percent of Target	Deviation from Target	Percent of Average	Location
High	0.095	99.259	0.046	100.023	0.7560
Low	0.013	0.134	0.381	99.109	0.9470
Range	0.082	0.527	0.914	0.914	
Average	0.083	96.327	0.217	100.008	
Std. Dev.	0.003	0.384		0.338	

Target 0.300 Sample Length 66.000

Upper Limit 0.1500 Total # Data Points 0.711.000

Lower Limit 0.300 % Data within Limits 100.000

File Type Setup Print Data File Options Hold Back

F1 F2 F3 ESC Process Mode



The Model MT-500 Main Screens Showing Example Tensile Test Data.

Utilize the Console Controls of Your Test Stand And Collect Data with Ease:

Your MT-500 Software collects data from motorized test stands with digital RS-232 force gauges. Use test stand console controls to operate motor, speed, and start/stop function. MT-500 Software collects data serially to provide application specific graphics and statistical information.

Create Custom Recipes with Ease:

Setup parameters allow data collection and display flexibility including test mode, scaling, and many more.

Operator Recall of Recipes for Automatic, Error-free Setup and Operation:

Recipes or "Test Types" can be recalled with the click of a button, to automatically set up your force tester for immediate operation.

Multiple Test Modes Built-in including Tensile, 1% Secant, Coefficient of Friction, Peel, Seal, TEA, Tensile Stiffness...

Full ASTM Test Data Reporting Capabilities...

