

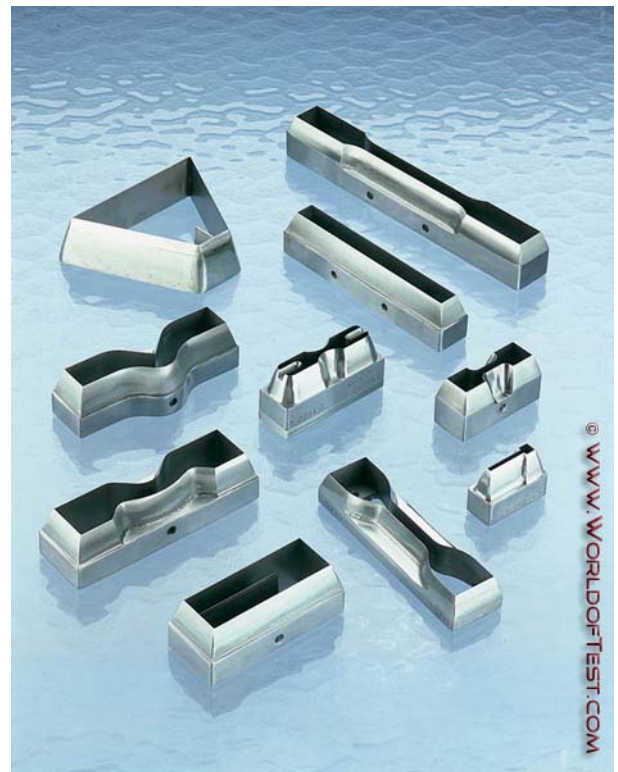
## Specimen Cutting Dies and Molds

### Specimen Cutting Dies - Cutters

**Fully Certified Sample Preparation and Specimen Cutting Dies as per ASTM, JIS, DIN, ISO standards, usually carried in stock**

Qualitest, a leading manufacturer and supplier of testing equipment for rubber and plastics, offers a full range of certified Specimen cutting dies and cutters as well as Clicker presses for polymer laboratories. This high quality range of specimen cutting dies and sample cutter are made exactly according to the specific ASTM, DIN, ISO, or JIS standards and are highly accurate for perfect preparation of your test specimens. All of these specimen cutting dies come in a padded carrying case and are supplied with full certification. Qualitest also offers re-sharpening service for these specimen dies and maintain highest quality of production and standards.

Qualitest offers cutting dies for all ASTM, DIN, ISO, and JIS standards. A list of standard dies is available on Qualitest website [www.WorldofTest.com](http://www.WorldofTest.com). Qualitest can also provide custom dies at request.



All molds are delivered with a fully detailed inspection report and a certificate of compliance to NIST / SCC and the ISO Guide #25.

Specimen Cutting Dies and Molds

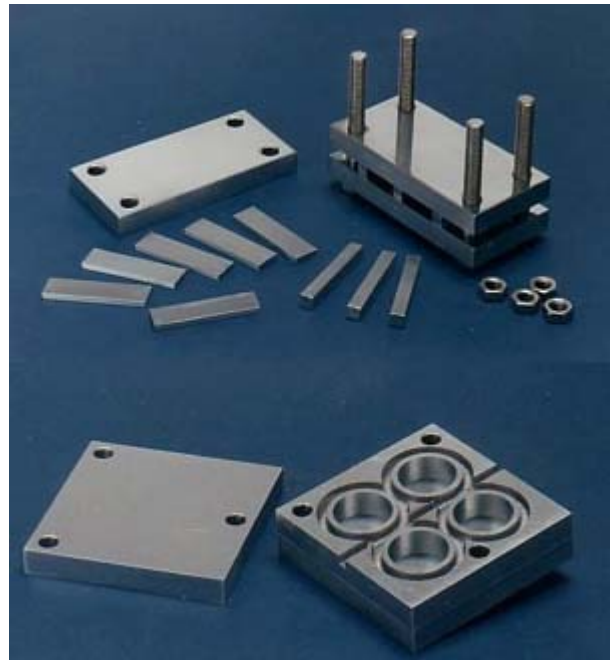
**Specimen Molds**

Our molds are made of P20 tool steel that is hardened, ground and polished, then chrome-plated with the option of teflon coating. Typical molds have one to four cavities. Various sizes are available. Dies are EDM wire cut from solid tool steel.

The mold's inside surface is perpendicular to the cutting edge and polished. This insures that test specimens are cut to uniform thickness. Dies are designed to be re-sharpened. Both molds and dies meet most national and international standards such as ASTM, DIN and ISO.

Tensile test, tear test and other dies can be supplied with mallet handle for fast, easy hand stamping of test specimens using a maul, or for use in clicker presses.

ASTM D-412 popular sizes C and D are standard, with A, B, E, and F also available upon request. Rotary type cutters are designed for use in standard drill press chucks. Cutters can be supplied to standard dimensions as indicated by ASTM D-412.

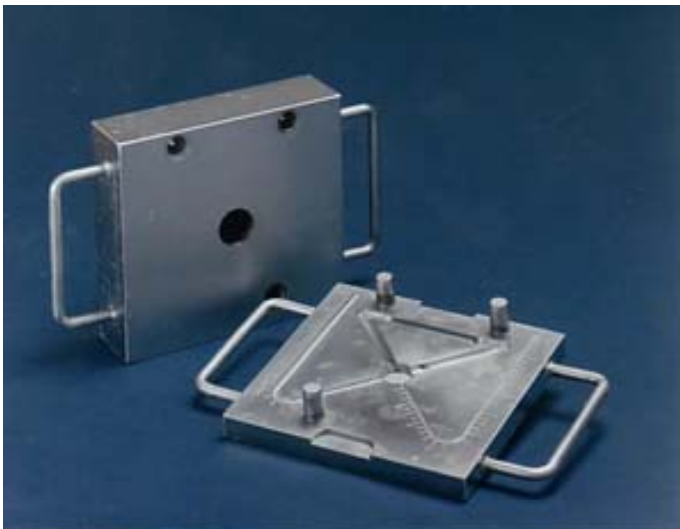


Qualitest offers a full line of specimen mold and dies, our standard ASTM molds are listed below, for custom designs or other standard molds contact Qualitest. Tear Test Dies; possess the same physical features as the Tensile Test Die, including the mallet handle/ clicker press option.

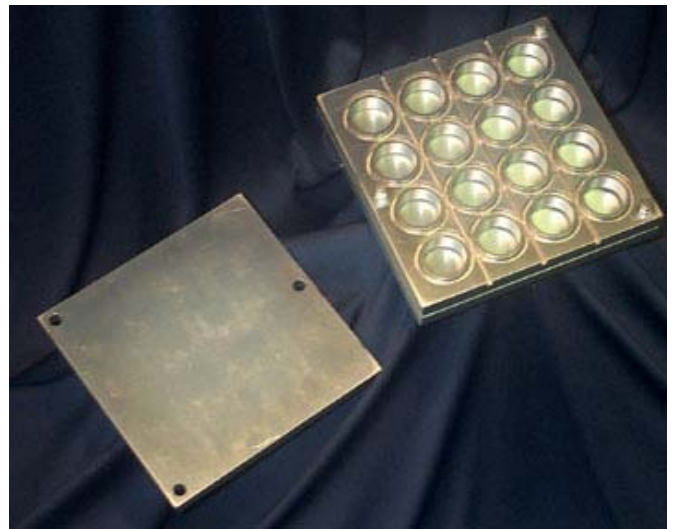
<b>ASTM standard</b>	<b>Molds</b>
D-15 & D-3182	Mold for 6" x 6" x .075" rubber test specimens Single Cavity With hinges & handles Double cavity with hinges & handles Four cavity with hinges & handles
D-395	Compression Set Test Molds Four Cavity Nine Cavity Sixteen Cavity Method A Constant Load Test Device Method B Constant Deflection Test Fixture Additional Twelve Spacers

## Specimen Cutting Dies and Molds

<b>ASTM standard</b>	<b>Molds</b>
D-429	Adhesion Test Specimen Molds Method A Parallel Plate - Four Cavity Method B 90 degree stripping (Lord Adhesion)
D-638	Tensile Specimen Molds 2 Cavity 6 Cavity 12 Cavity
D-3123	Spiral & Transfer Molds Spiral Flow Mold for Plastics  "X" type rubber flow molds-transfer type for compound evaluation
D-2138	Cord Test Sample Molds Eight Cavity, four test samples Sixteen Cavity, eight test samples
D-1630	Abrasion Resistance 6 Cavity
D-256	Izod Impact Test Mold - 2.5 x 0.5 x 0.125 inch - 1 Cavity, Chrome Plated  Charpy Impact Test Mold - 5 x 0.5 x 0.125 inch - 1 Cavity, Chrome Plated



X-Flow Mold



ASTM D395 Sixteen Cavity Mold